



**铭星供水设备**  
MINGXING WATER SUPPLY

# INSTALLATION GUIDE BOOK

---



# Catalogue



01

Assembly  
module  
plates



02

Internal  
support  
installation



03

Plug  
installation



04

Concluding  
work



01



# Assembly module plates



Check the foundation beam according to the drawing parameters. The center distance of adjacent strip beams shall be checked; Width and height of each beam; The surface of strip beam shall be leveled to a plane.





When assembling the bottom plates, first put the convex surface of the plate upward, determine the module punching position according to the marking of the module assembly drawing, and then clamp the sealing strip between the two modules. Note that the length of the sealing strip shall be greater than the side length of the module.





When placing the sealing strip, pay attention to the placement method of the rubber strip at the junction of adjacent modules



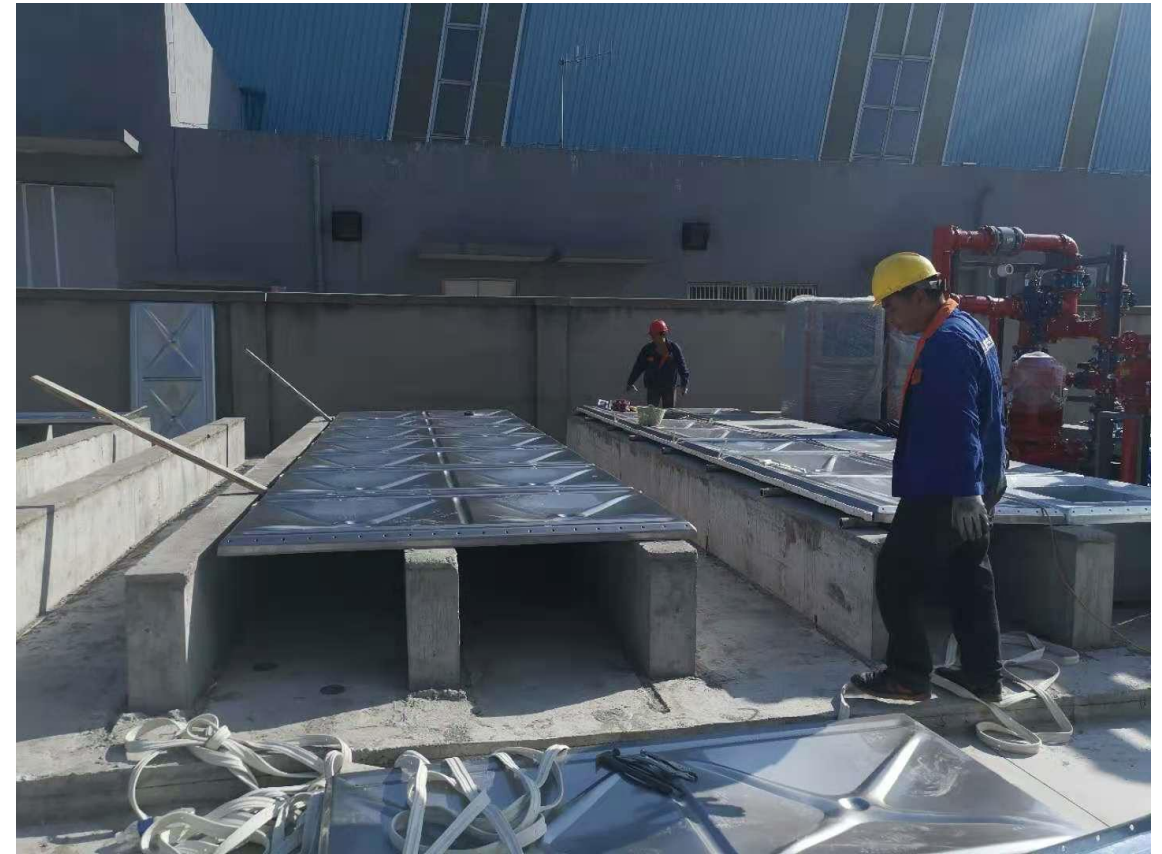


Tighten with an electric wrench, and the sealing strip shall be higher than the plate seam after being squeezed.



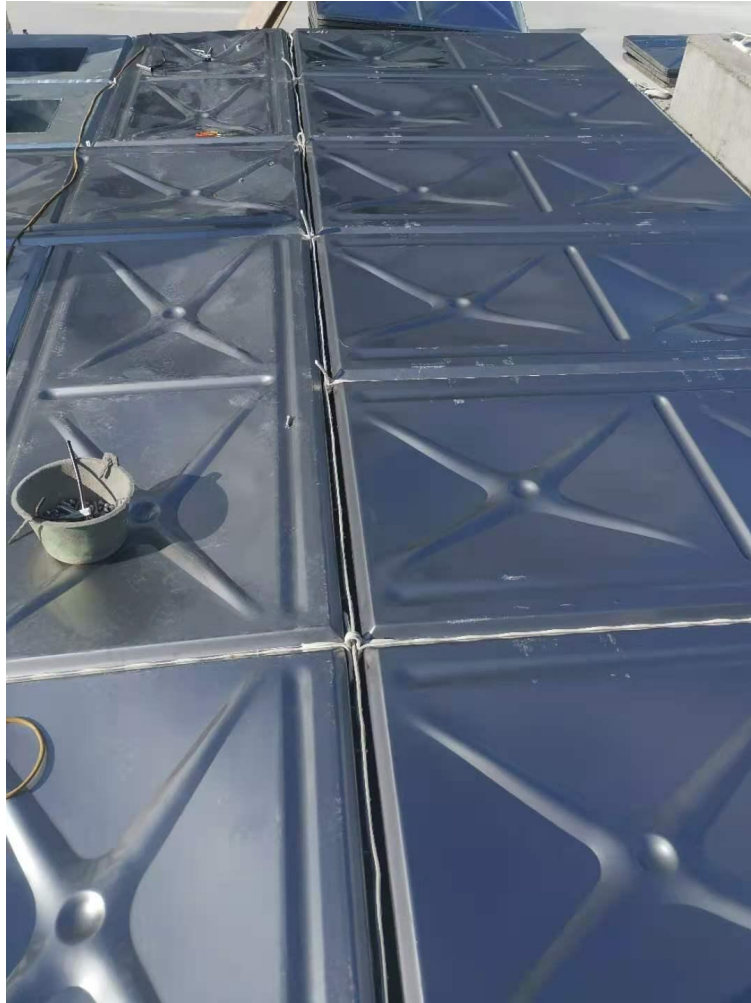


The unit bottom plate shall be installed and turned over, and the part in contact with water shall be upward; The bolt part is downward.





The bottom plate is assembled and connected.





Bottom plate assembly completed.





When connecting the side plate with the bottom plate, place the plate to be installed at the predetermined position





After positioning the side plate and the lower side of the bottom plate, fix the plate with screws.  
Be careful not to damage the sealing strip.





Installation of top plate and manhole plate. According to the requirements of plate layout on the drawing, "L" type connectors are required at the connection between the top plate and the side plate, which are connected with bolts after clamping the sealing strip.





The top plate installed with "L" type connectors shall be used, and the direction of connectors shall be noted.





The installation of the top plate shall be carried out according to the plate configuration requirements on the drawing, and the installation method is the same as that of the bottom plate. The connecting screws of the top plate of the water tank placed outdoors are in the water tank; The water tank plates placed indoors shall be installed reversely and the connecting bolts shall be outside the water tank.





 02



# Internal support installation



## Installation scheme:

1: There is a 3-hole square column installation position, along the 17 meter long connection joint between the 6 meter side of the bottom plate of the water tank..

2: First, install three 17 meter long lacing bars in the upper hole of the 3-hole column; Then place three layers of 6m long lacing bars on the three. Finally, install the other 17 m lacing bars on the 6 m lacing bars.

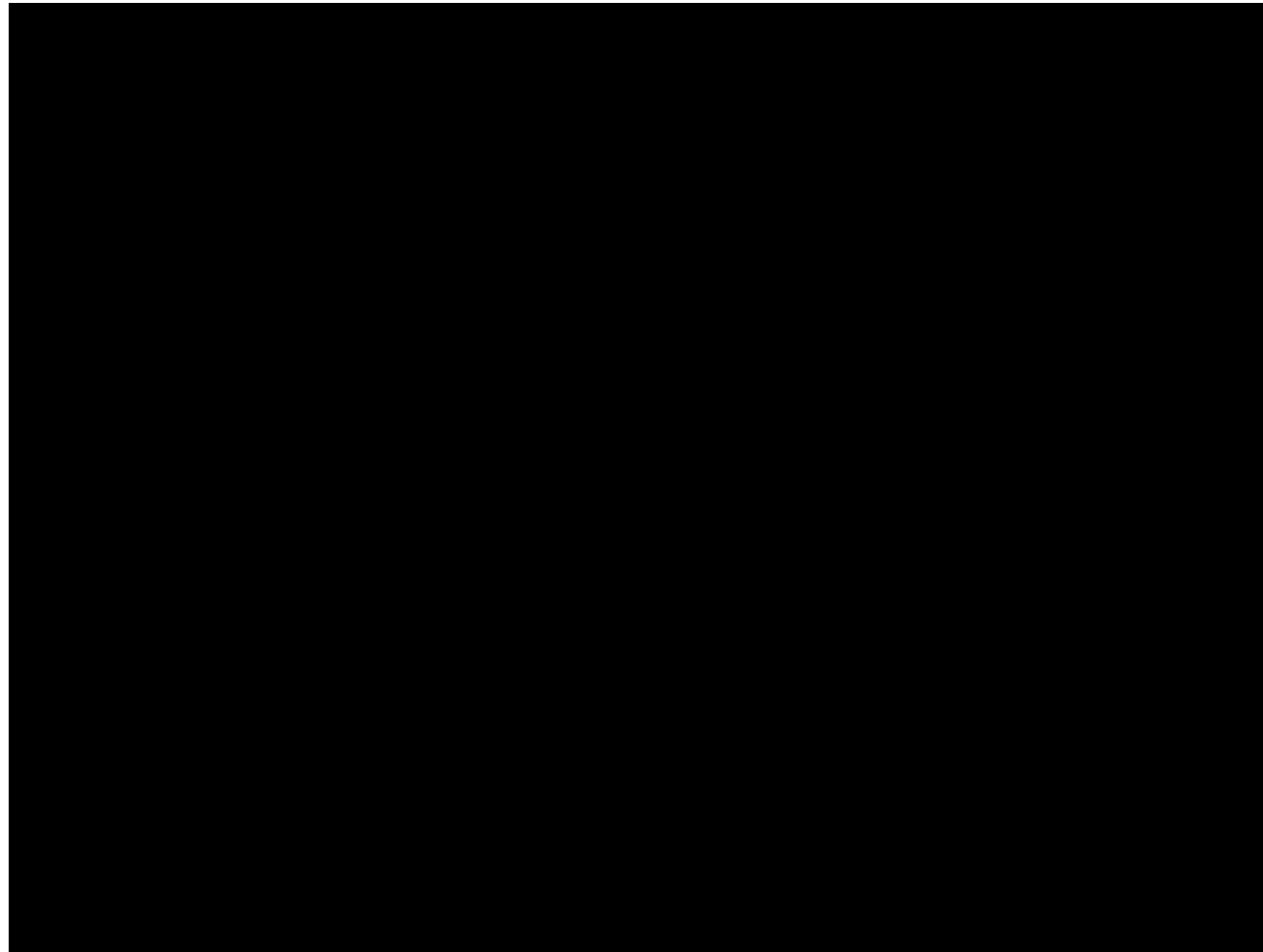


## Schematic Diagram of Installation Method of Square Columns with Holes



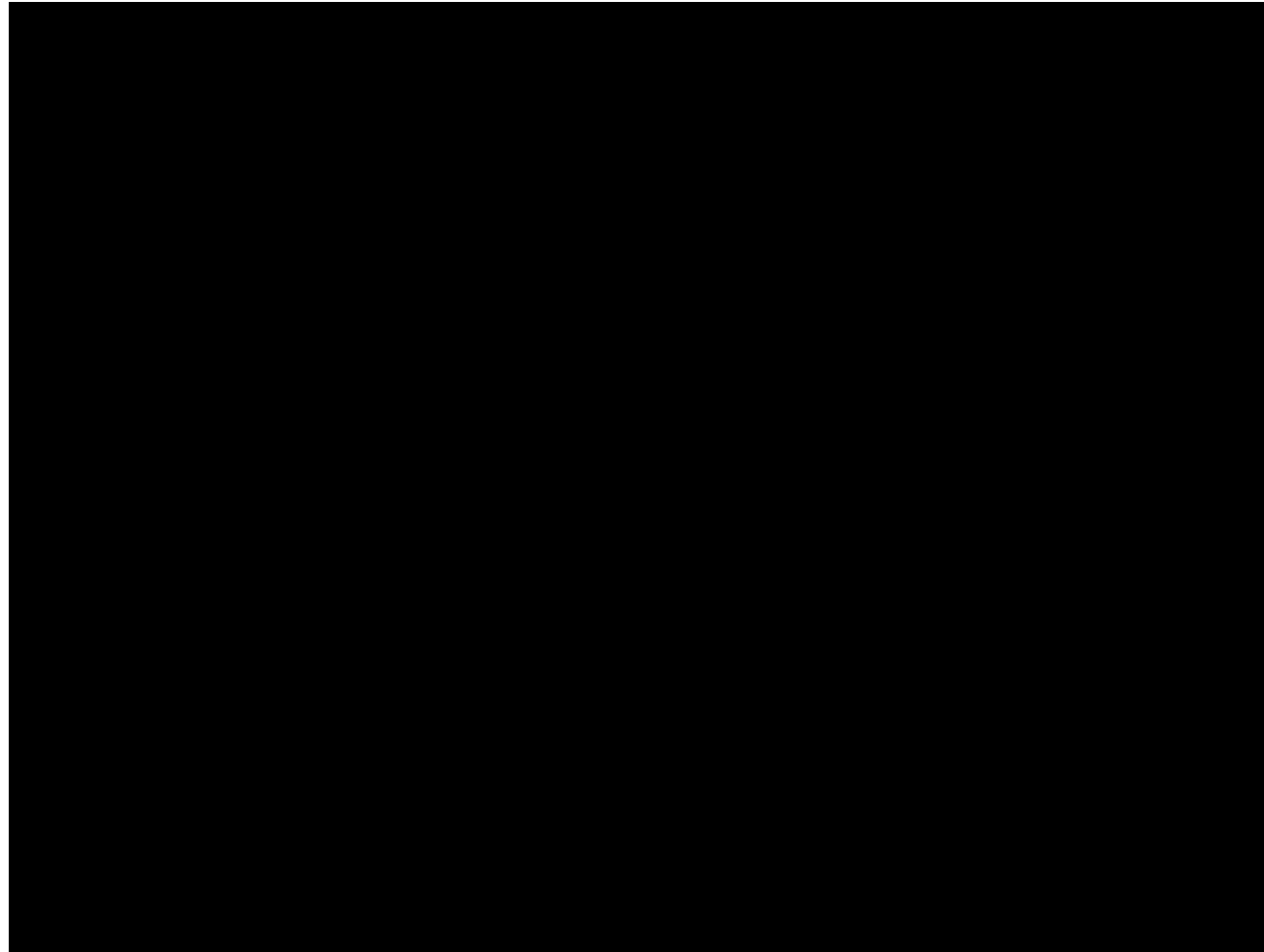


Connection mode of lacing wire extension: use the inner wire hexagon to connect with the lacing wire thread (double click the picture with the left mouse button to watch the video)



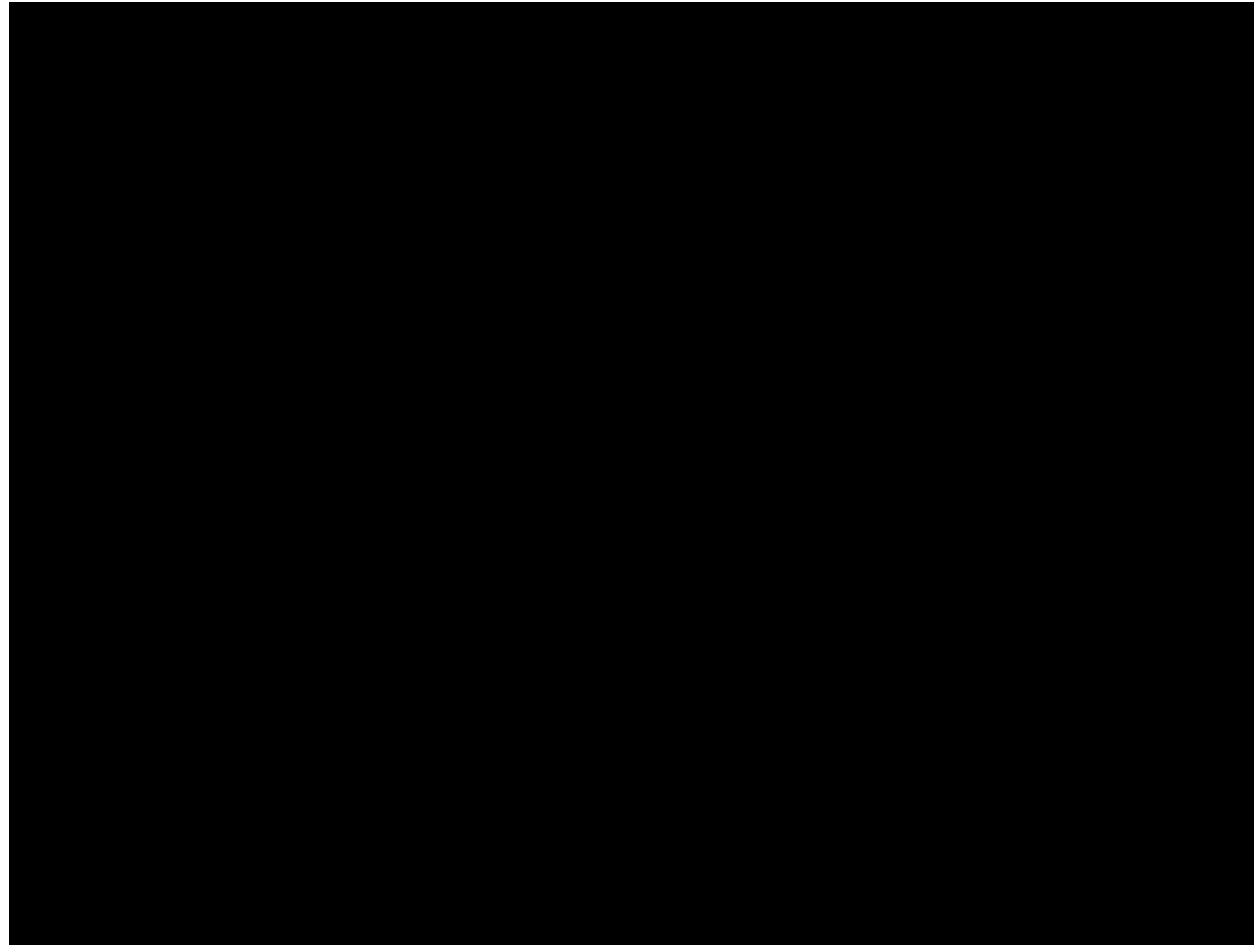


Connection mode of lacing wire extension: use the inner wire hexagon to connect with the lacing wire thread (double click the picture with the left mouse button to watch the video)



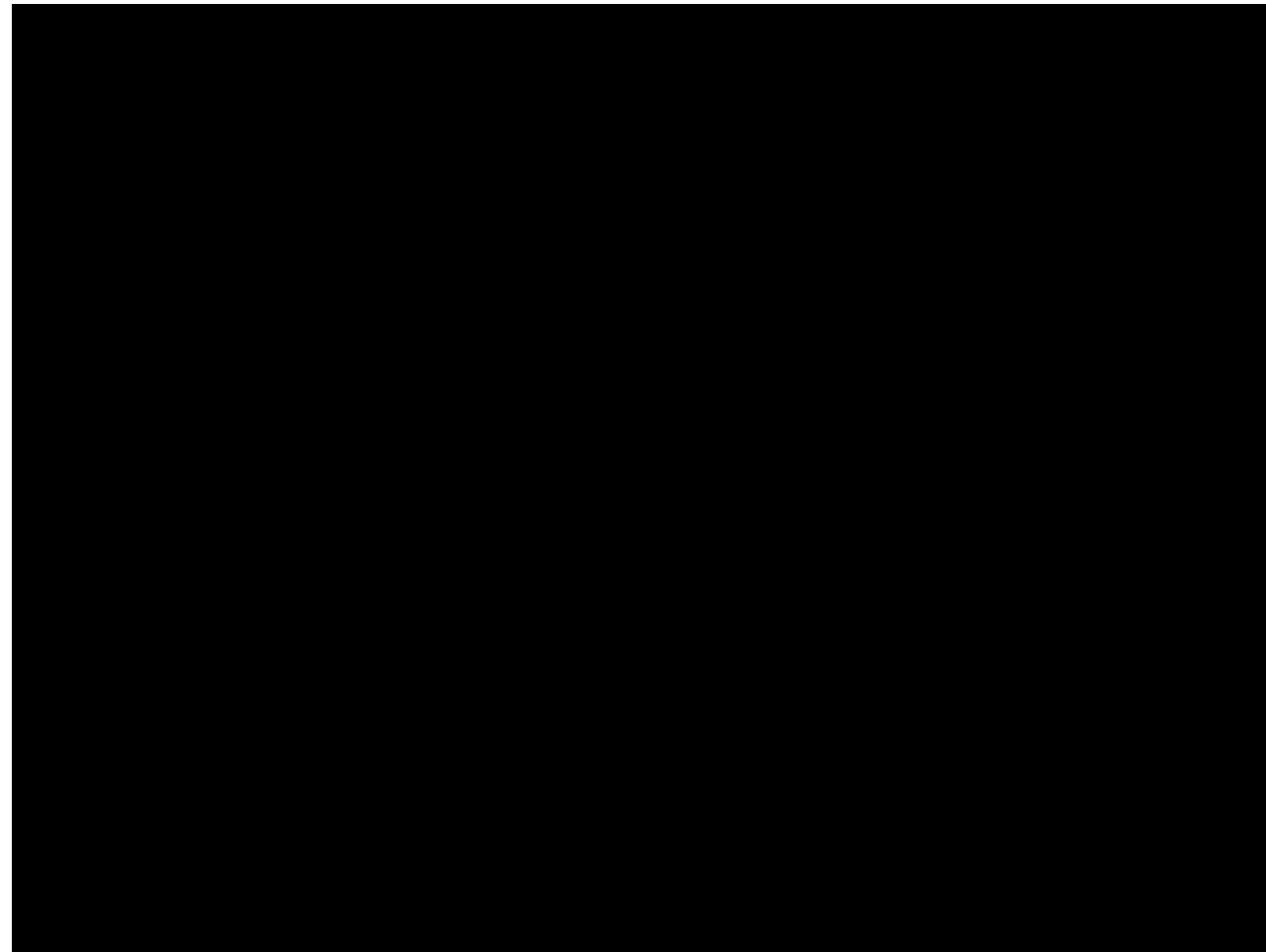


Sealing and sealing method for the connection part of the lengthened lacing wire: the two sides are sealed outside the hexagon nut with tapered silicone sleeves and stainless steel tubes (double click the picture with the left mouse button to play the video)





Sealing and sealing method for the connection part of the lengthened lacing wire: the two sides are sealed outside the hexagon nut with tapered silicone sleeves and stainless steel tubes (double click the picture with the left mouse button to play the video)





## Installation Diagram of Tapered Silicone Sleeve





Hexagonal silicone sleeve+stainless steel nut+stainless steel gasket+sealing strip are used for the part of lacing wire near the water tank; The connecting position between the lacing wire and the hexagon of the inner thread is a conical silicone sleeve.





Stainless steel nuts and gaskets are used for tie bars at the inner side of the water tank





The tie bar shall pass through the 18.5mm diameter hole on the side plate with stainless steel nut and gasket at the inner side of the water tank.



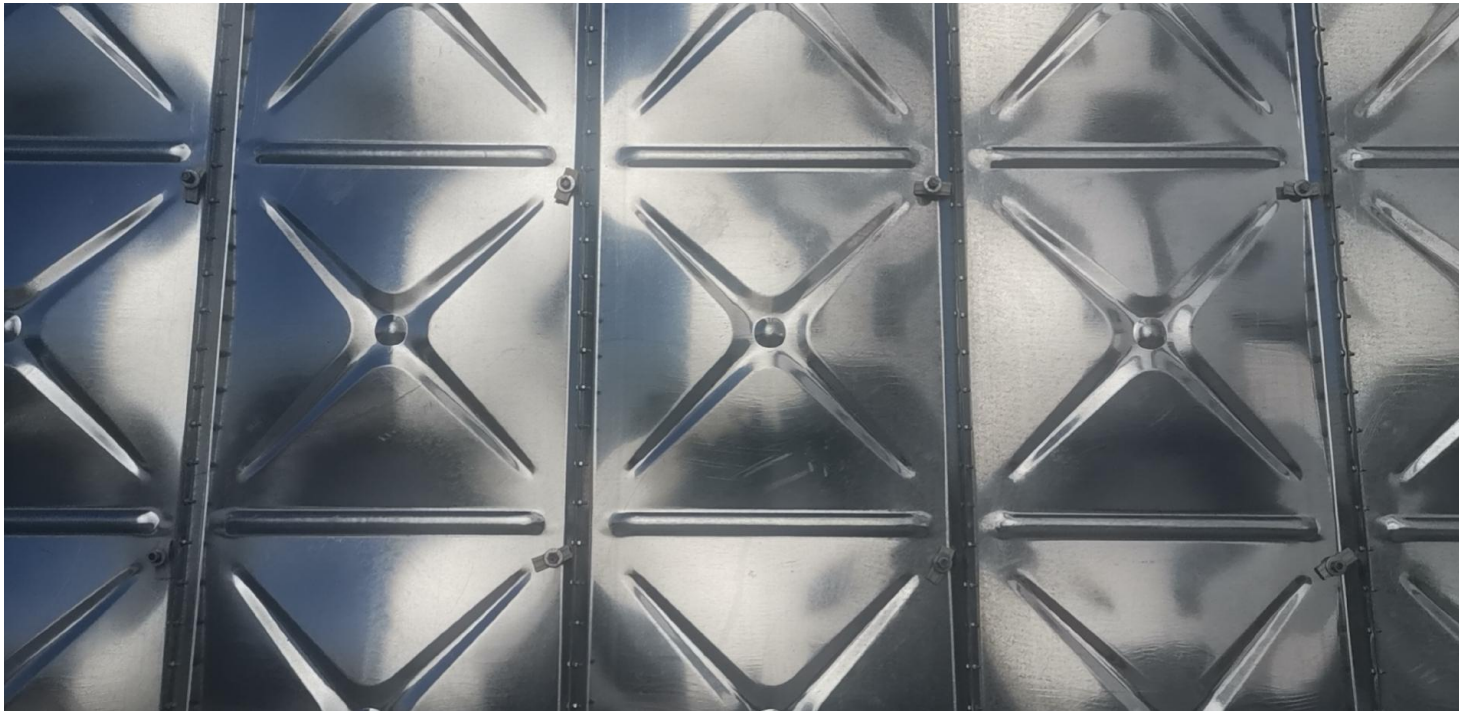


Galvanized nuts and gaskets are used after the lacing bar passes through the side plate of the water tank.



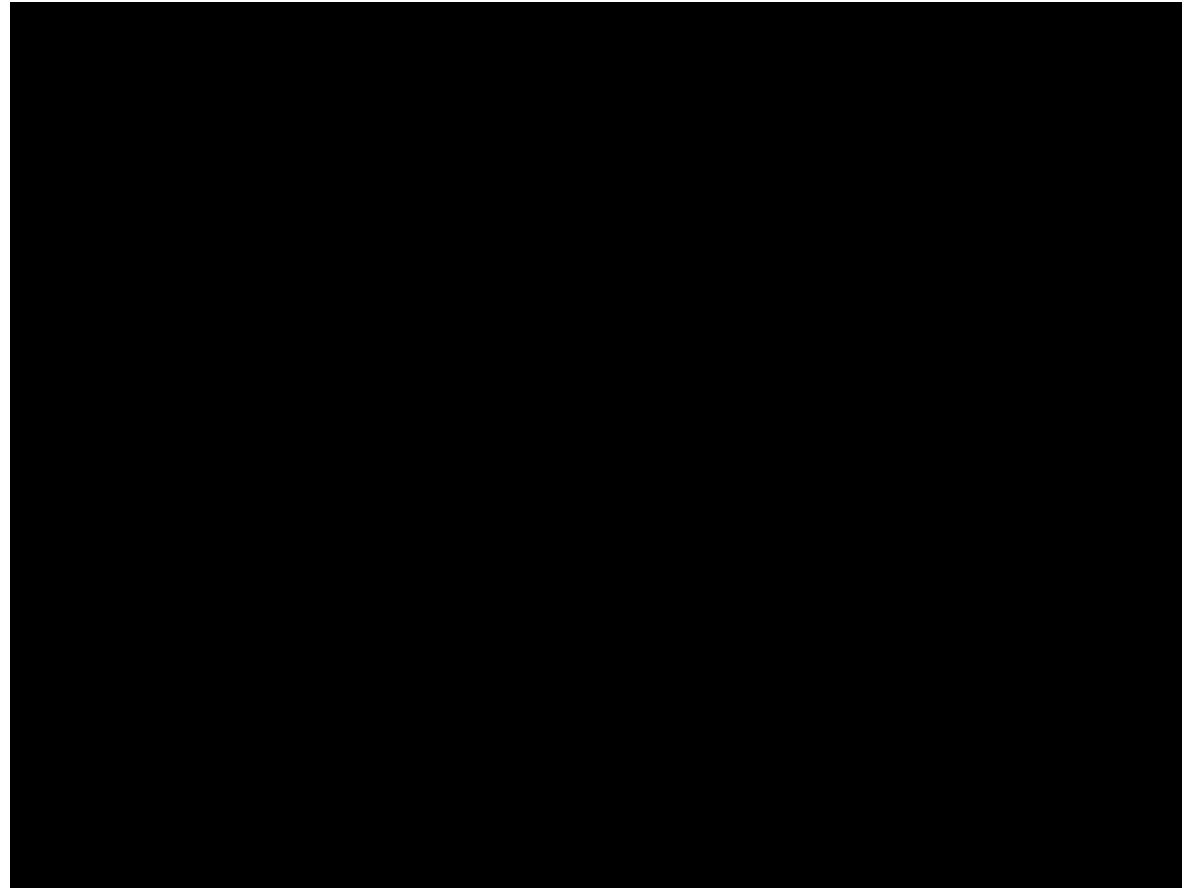


## Location of tie bar on side plate of water tank





Installation method of silicone round plug (double click the picture with the left mouse button to play the video)





## Picture of lacing bar connection completion



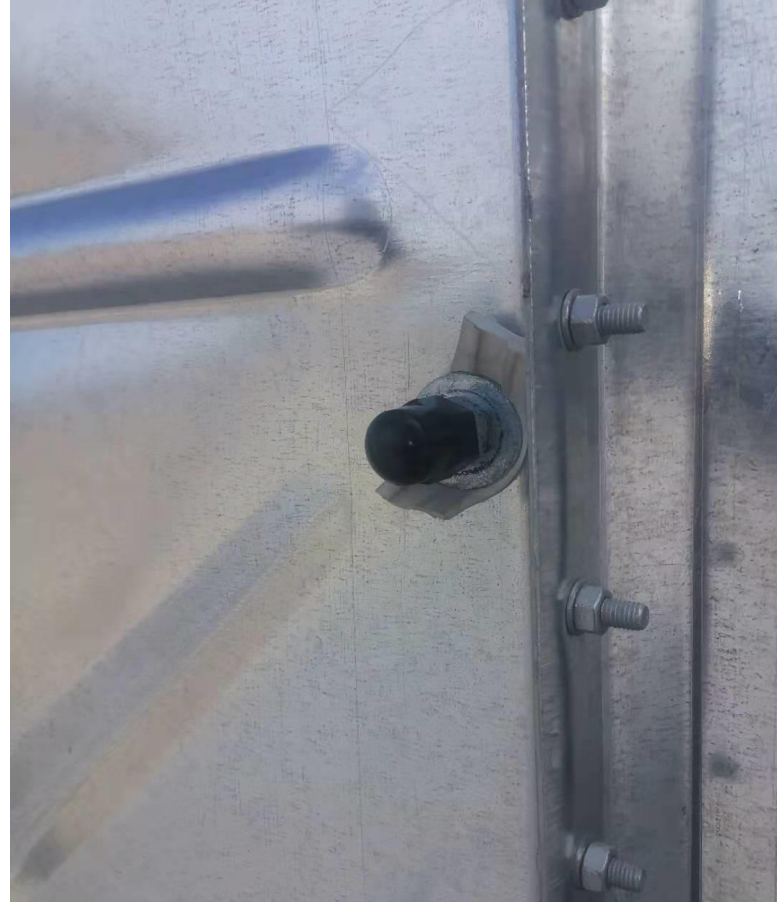


## Picture of lacing bar connection completion



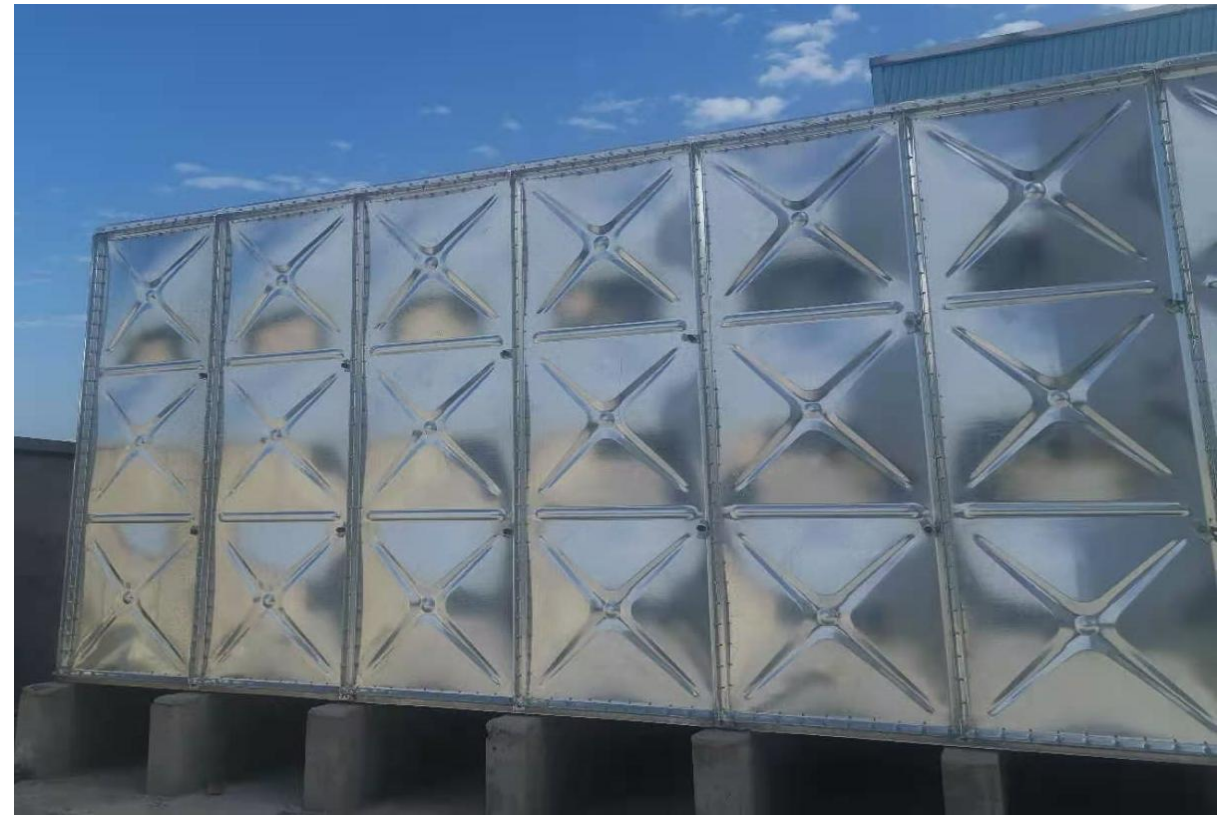
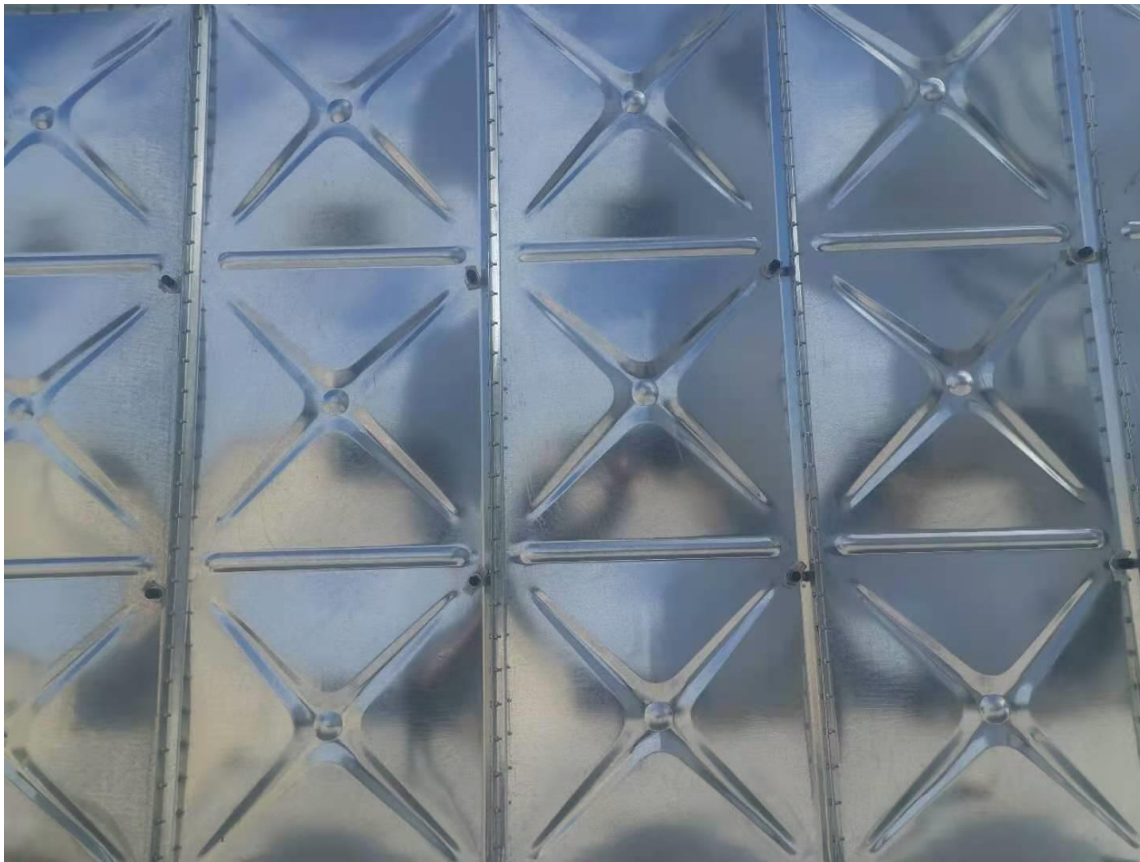


## Picture of completed installation of external tie bar of water tank





## Picture of completed installation of external tie bar of water tank





03



# Plug Installation



**Remove the excess sealing strip at the joint between the side plate and the top plate straight seam with a utility knife.**





Clean the working surface with a brush





**Remove the excess sealing strip at the joint between the side plate and the top plate straight seam with a utility knife.**





**Use M8 stainless steel bolts to pass through diamond shaped stainless steel gaskets and silicone plugs; Pass the stainless steel bolt through the hole between the plates in a vertical direction according to the longer diagonal of the stainless steel diamond gasket.**





**Hot dip galvanized corner pieces with holes in the middle shall be used outside the box and shall pass through the bolts.**





**Hold the nut with a wrench.**





The water tank shall be fastened with an electric wrench until the silicone parts are extruded and deformed.





**The water tank connector has been connected with the plate,  
and it can be installed according to the marked position on  
the assembly drawing**



04



# Concluding Work



- 1: Check that all screws are fastened;
  - 2: Clean the water tank;
  - 3: The outside of the water tank plate shall be wiped clean;
  - 4: There shall be no gap between the bottom plate of the water tank and the strip beam.
- Water injection test can be conducted after the above requirements are completed.



# Finished water tank

